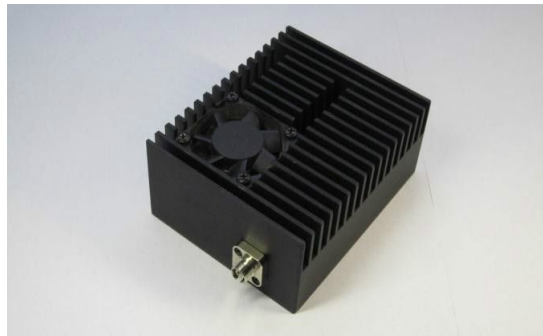


1550nm Narrow Line-width Tunable Laser Module



Description

Idealphotonics' narrow-band tunable laser module is an external cavity semiconductor module based on chip level integration. It is characterized by high reliability, accurate wavelength control, high output power and small form-factor etc. Due to its external cavity structure, the module has very narrow spectrum line width. It also features fast tuning speed and low power consumption.

Feature

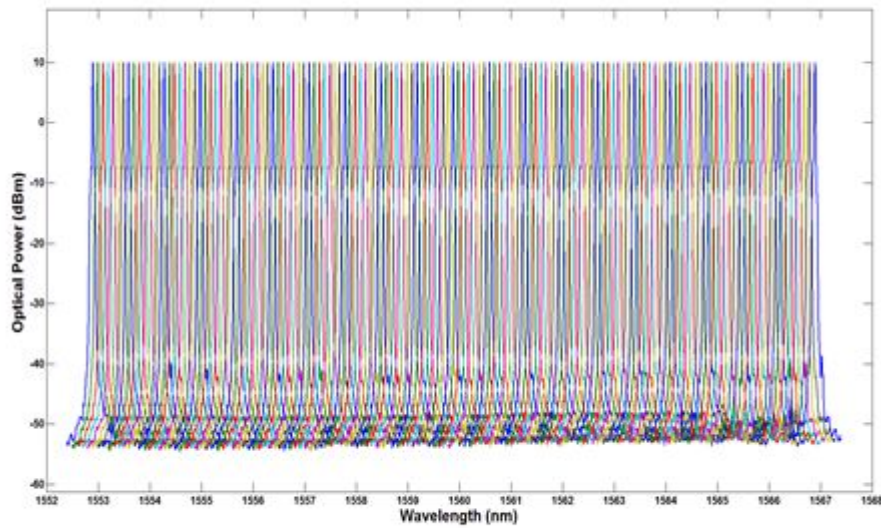
- Hybrid integrated chip technology
- SMF or PM fiber with standard connector option
- Continuous wavelength tuning
- USB interface
- Narrow line-width
- Standard 5V DC power plug
- Customized center wavelength within C-band

Application

Idealphotonics's narrow-band tunable laser module has wide range application on medical and healthcare analysis, industrial sensing, petrochemical industry, safety inspection and security detection, etc.

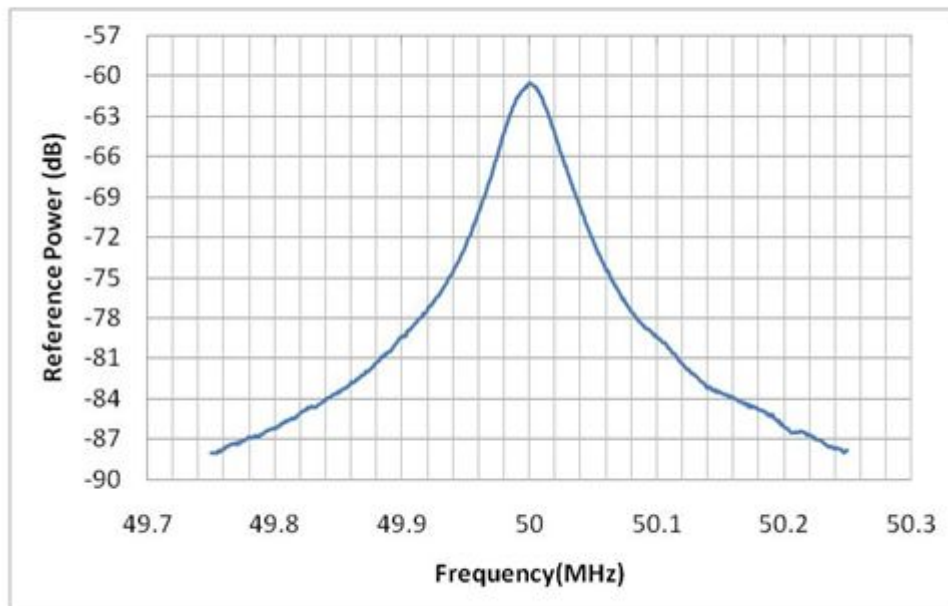
Spectrum

nTL 12+nm tuning range



- >50dB SMSR
- 14nm continuous tuning with 0.1nm step

nTL linewidth measurement



- FWHM < 40kHz

Please contact us for more information about our products.